



PIÑONES SIMPLES EN ACERO INOXIDABLE - DIN 8187 - ISO 606

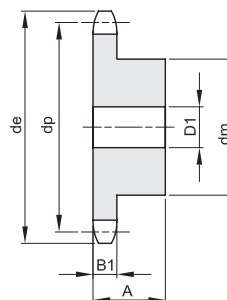
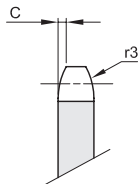
SIMPLEX SPROCKETS IN STAINLESS STEEL FOR ROLLER CHAINS

3/8" x 7/32"

9,525 x 5,72 mm

Rodillo 6,35 mm

06B - 1



B1	C	r3
----	---	----

5,3	1	10
-----	---	----

Material INOX AISI 304 L

Z	de	dp	dm	D1	A	Kg.
13	43,5	39,80	28	8	25	0,13
14	46,5	42,80	31	8	25	0,16
15	49,5	45,81	34	8	25	0,18
16	52,5	48,82	37	10	28	0,24
17	55,5	51,83	40	10	28	0,28
18	58,6	54,85	43	10	28	0,33
19	61,6	57,87	45	10	28	0,36

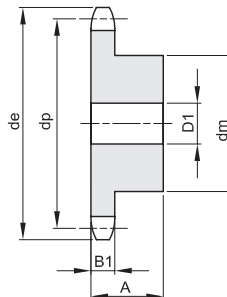
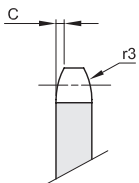
Z	de	dp	dm	D1	A	Kg.
20	64,6	60,89	46	10	28	0,39
21	67,6	63,91	48	12	28	0,42
23	73,7	69,95	52	12	28	0,50
25	79,7	76,00	57	12	28	0,60
30	94,8	91,12	60	12	30	0,72

1/2" x 5/16"

12,7 x 7,75 mm

Rodillo 8,51 mm

08B - 1



B1	C	r3
----	---	----

7,2	1,3	13
-----	-----	----

Material INOX AISI 304 L

Z	de	dp	dm	D1	A	Kg.
12	53,9	49,07	33	10	28	0,21
13	57,9	53,06	37	10	28	0,26
14	61,9	57,07	41	10	28	0,32
15	65,9	61,09	45	10	28	0,38
16	69,9	65,10	50	12	28	0,46
17	74,0	69,11	52	12	28	0,51
18	78,0	73,14	56	12	28	0,59

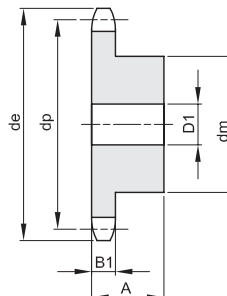
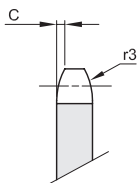
Z	de	dp	dm	D1	A	Kg.
19	82,0	77,16	60	12	28	0,67
20	86,0	81,19	64	12	28	0,76
21	90,1	85,22	68	14	28	0,85
23	98,1	93,27	70	14	28	0,94
25	106,2	101,33	70	14	28	1,01
30	126,3	121,50	80	16	30	1,46

5/8" x 3/8"

15,875 x 9,65 mm

Rodillo 10,16 mm

10B - 1



B1	C	r3
----	---	----

9,1	1,6	16
-----	-----	----

Material INOX AISI 304 L

Z	de	dp	dm	D1	A	Kg.
13	73,2	66,32	47	12	30	0,46
14	78,2	71,34	52	12	30	0,56
15	83,2	76,36	57	12	30	0,67
16	88,3	81,37	60	12	30	0,76
17	93,3	86,39	60	12	30	0,88
18	98,3	91,42	70	14	30	1,01
19	103,3	96,45	70	14	30	1,15

Z	de	dp	dm	D1	A	Kg.
20	108,4	101,49	75	14	30	1,21
21	113,4	106,52	75	16	30	1,35
23	123,5	116,58	80	16	30	1,47
25	133,6	126,66	80	16	30	1,60
30	158,8	151,87	90	20	35	2,41



PIÑONES SIMPLES EN ACERO INOXIDABLE - DIN 8187 - ISO 606

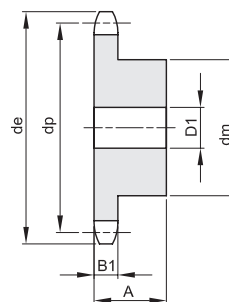
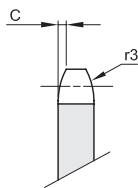
SIMPLEX SPROCKETS IN STAINLESS STEEL FOR ROLLER CHAINS

3/4" x 7/16"

19,05 x 11,68 mm

Rodillo 12,07 mm

12B - 1 - 2 - 3



B1	C	r3
11,1	2	19

Material INOX AISI 304 L

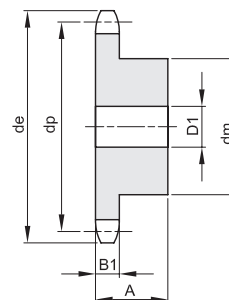
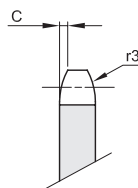
Z	de	dp	dm	D1	A	Kg.	Z	de	dp	dm	D1	A	Kg.
13	87,8	79,59	58	16	35	0,80	20	130,0	121,78	80	16	35	1,80
14	93,8	85,61	64	16	35	0,97	21	136,0	127,82	90	20	40	2,35
15	99,8	91,63	70	16	35	1,16	23	148,1	139,90	90	20	40	2,56
16	105,8	97,65	75	16	35	1,34	25	160,2	152,00	90	20	40	2,80
17	111,9	103,67	80	16	35	1,53							
18	117,9	109,71	80	16	35	1,62							
19	123,9	115,75	80	16	35	1,70							

1" x 17,02 mm

25,4 x 17,02 mm

Rodillo 15,88 mm

16B - 1



B1	C	r3
16,2	2,5	26

Material INOX AISI 304 L

Z	de	dp	dm	D1	A	Kg.	Z	de	dp	dm	D1	A	Kg.
13	117,7	106,12	78	16	40	1,77	20	173,9	162,38	100	20	45	4,03
14	125,7	114,15	84	16	40	2,08	21	182,0	170,43	110	20	50	5,14
15	133,7	122,17	92	16	40	2,46							
16	141,8	130,20	100	20	45	3,14							
17	149,8	138,22	100	20	45	3,34							
18	157,8	146,28	100	20	45	3,56							
19	165,9	154,33	100	20	45	3,78							